

What's been going on at the bottom end of the UK labour market?

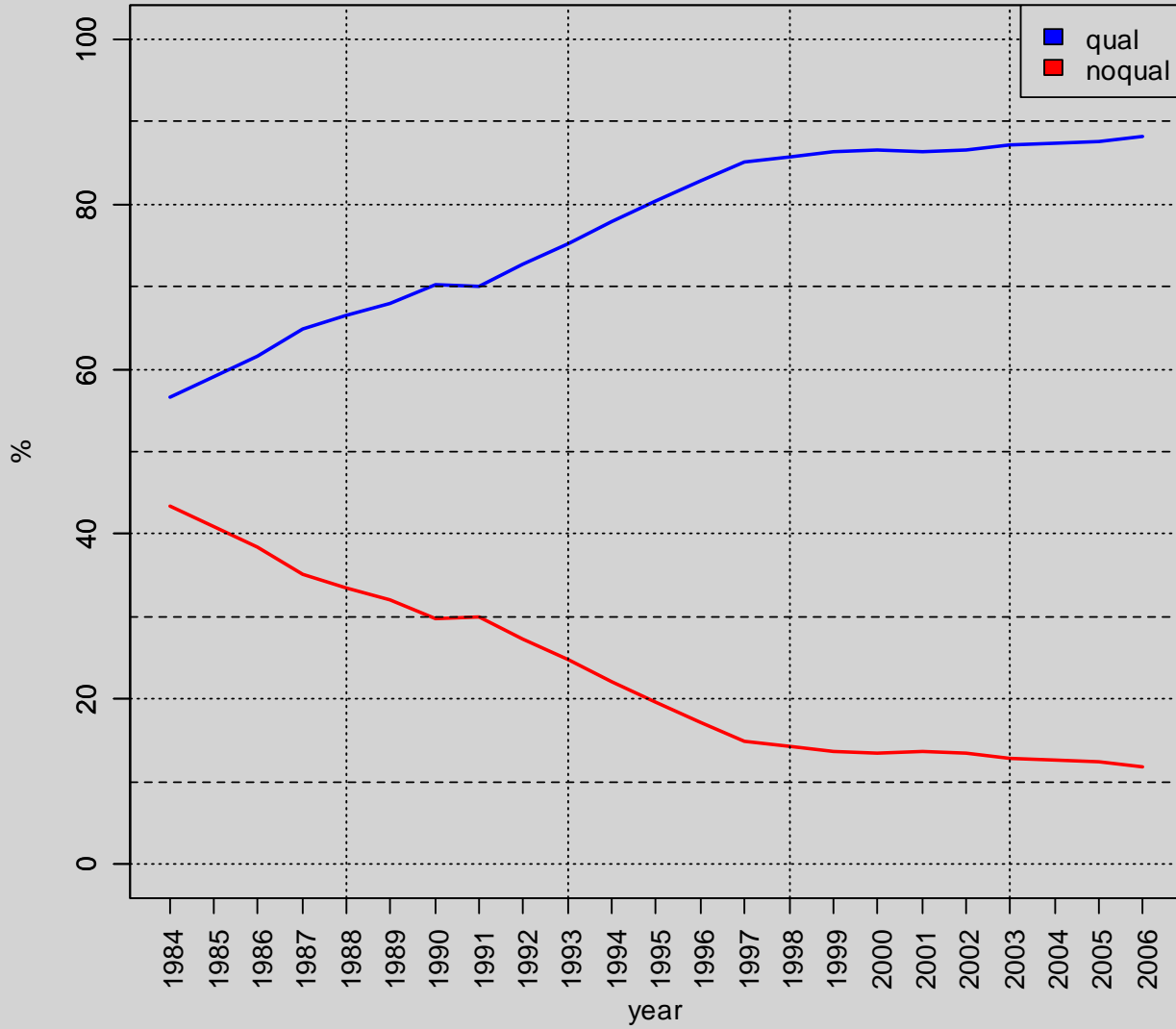
Michael Anyadike-Danes & Malcolm Campbell

Contact: m.anyadike-danes@erini.ac.uk

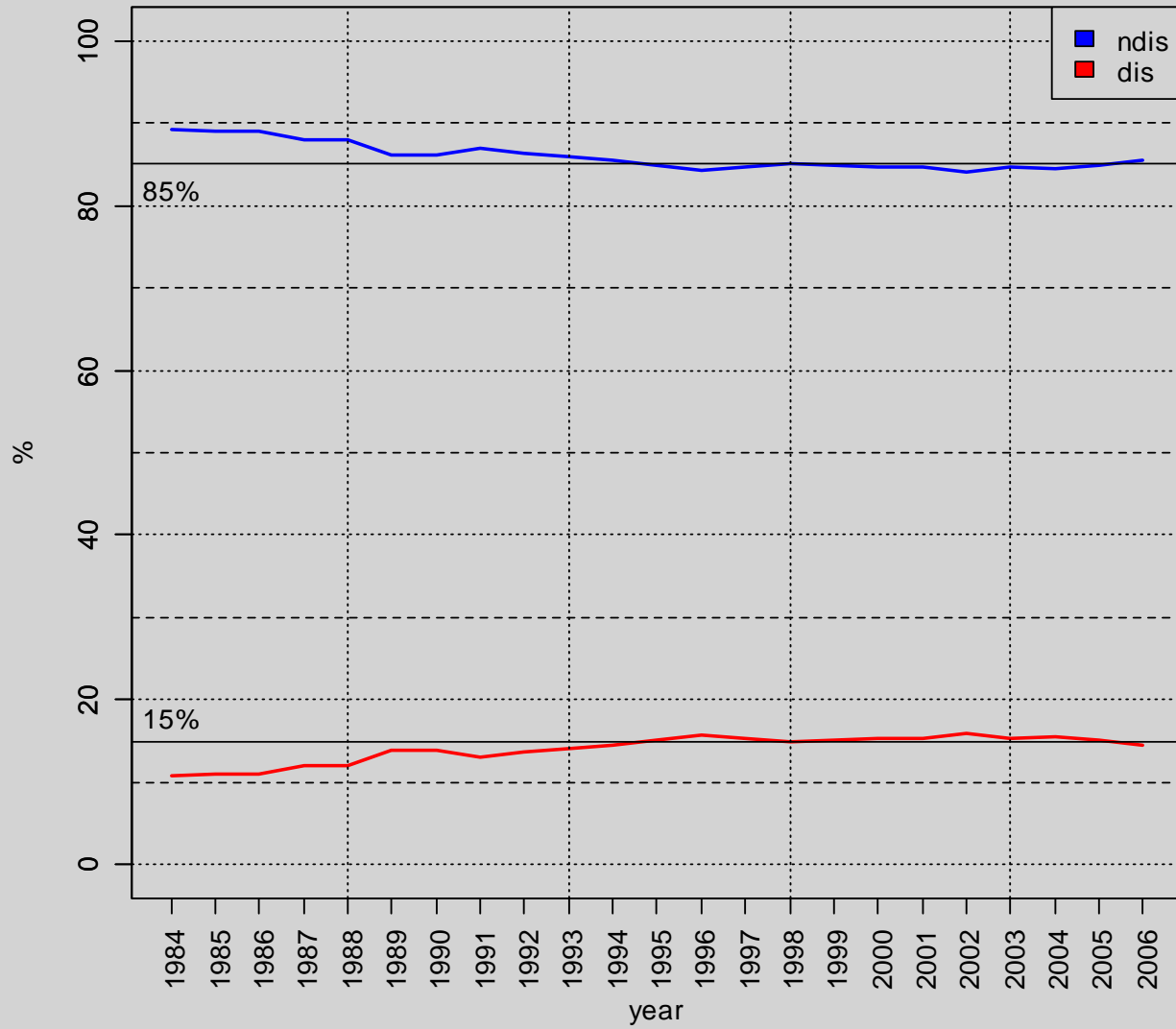
Overview

- Context
 - impact of skill-biased-technical-change on employment prospects of poorly qualified
 - 80% employment rate target & disadvantaged groups
 - Berthoud on employment disadvantage (DWP 2006 & 2007, JRF 2003 & 2007)
- Labour Force Survey data 1984-2006 from the Data Archive
- Sex, Age, Region
- And 2 dichotomous indicators of disadvantage
 - No Qualifications (noqual) vs any qualification (qual)
 - Disabled (dis) vs not disabled (ndis)
- Some challenges in putting the dataset together
- Pictures for males
 - Incidence: UK and regions
 - Employment rates: UK and regions

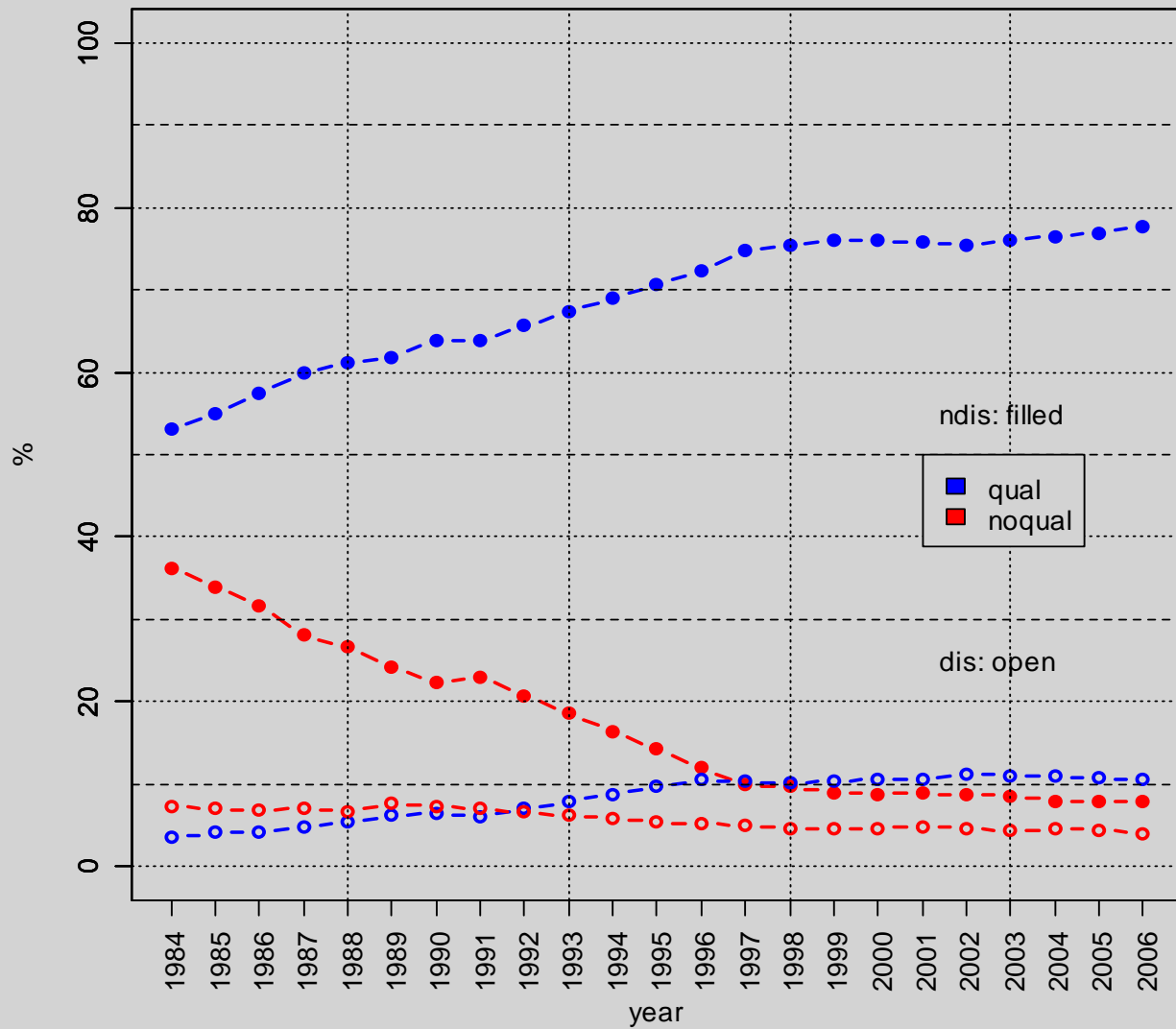
**UK Males: qual & noqual
ratio to working age population, 1984-2006, %**



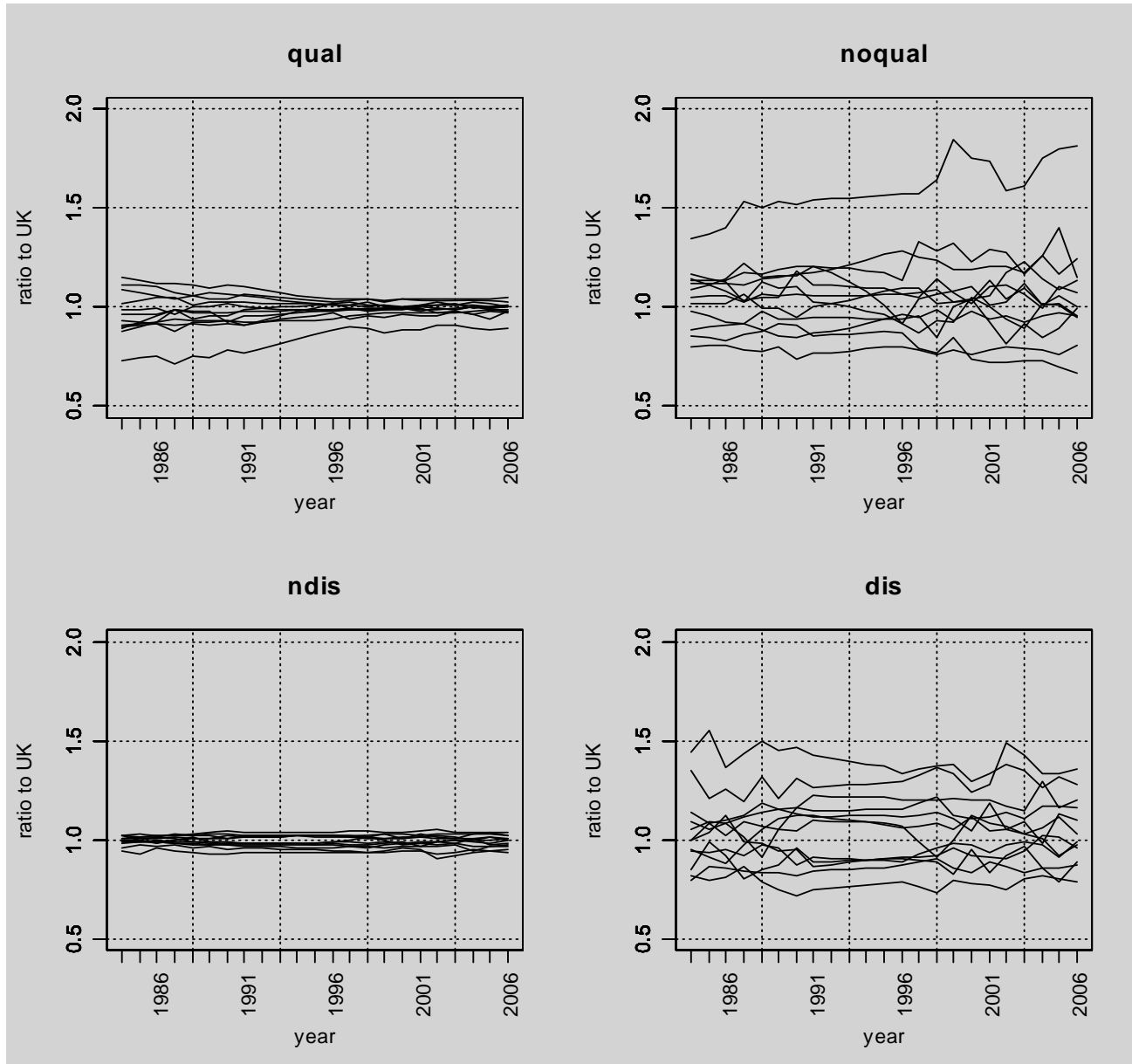
UK Males: ndis & dis
ratio to working age population, 1984-2006, %



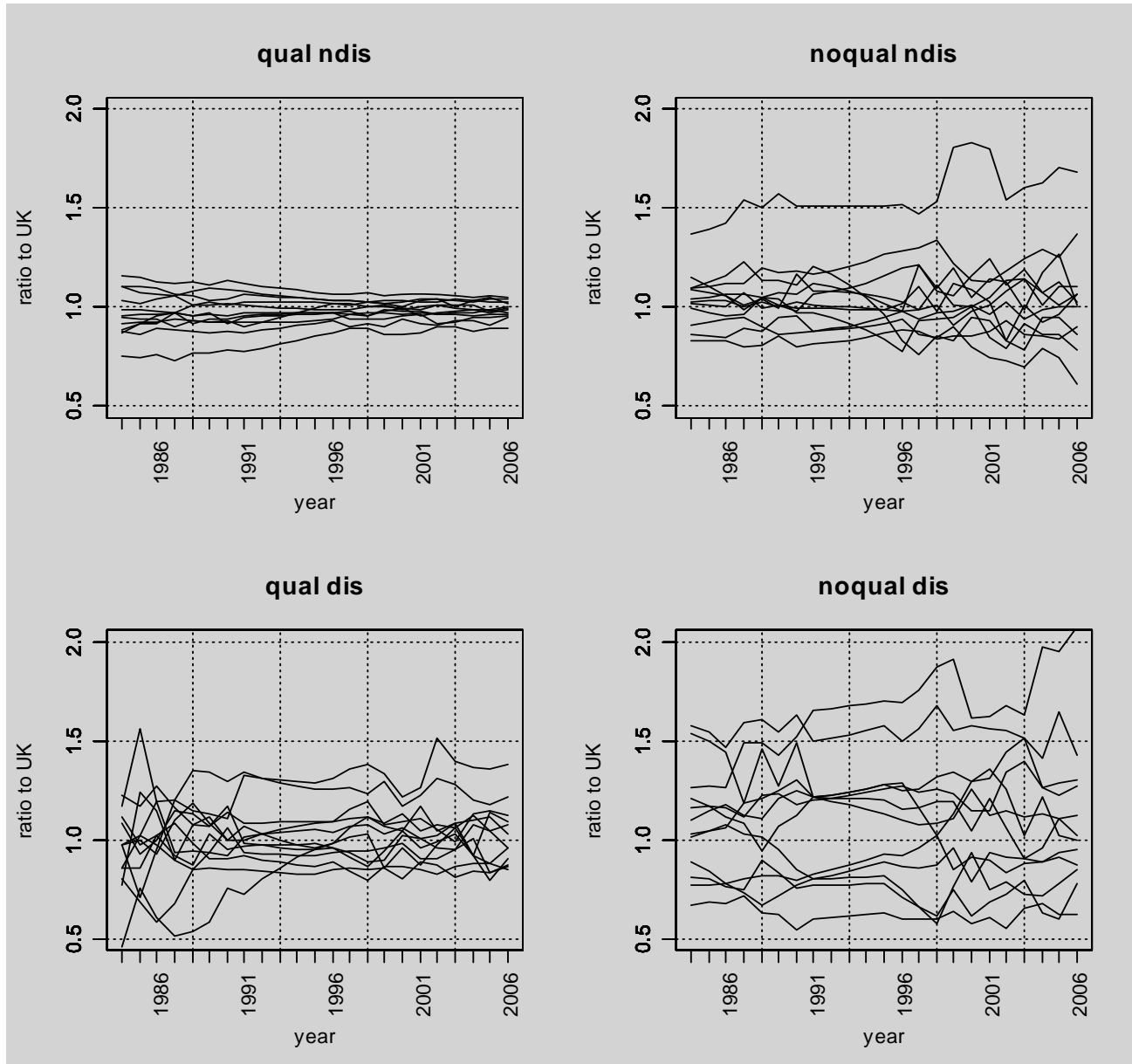
UK Males: all, qual & noqual, non-dis & dis
ratio to working age population, 1984-2006, %



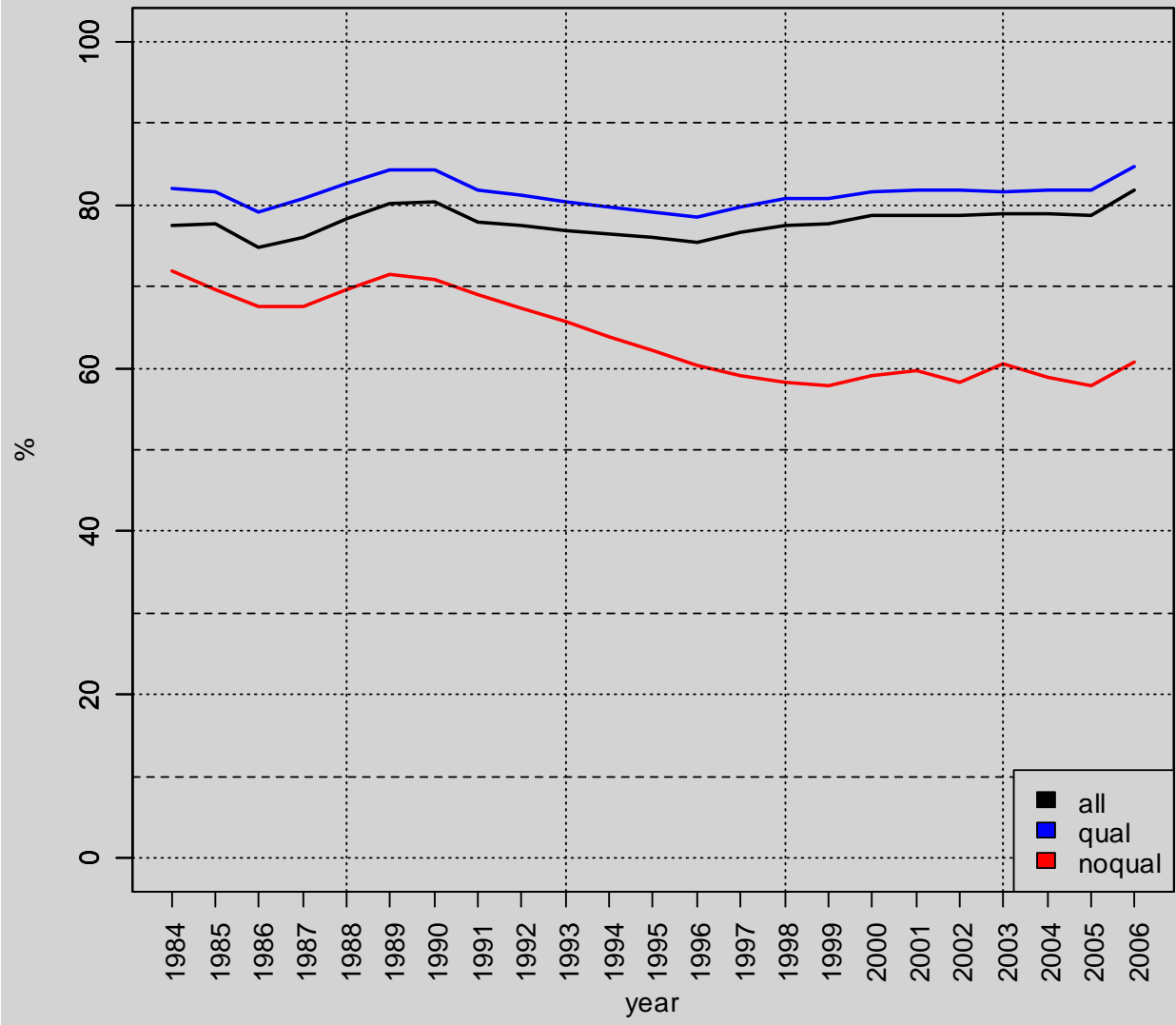
Regions, ratio to UK: incidence 1



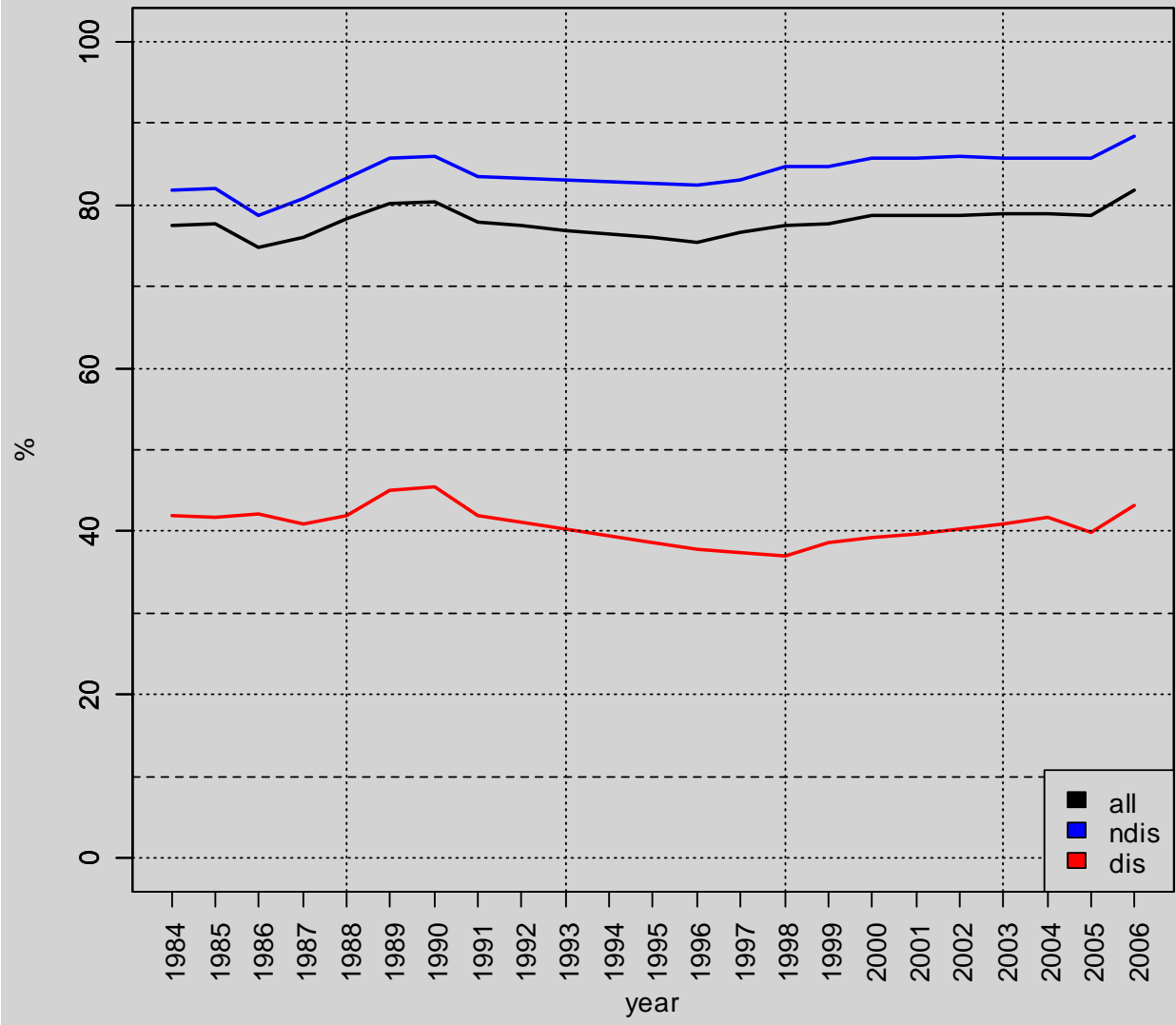
Regions, ratio to UK: incidence 2



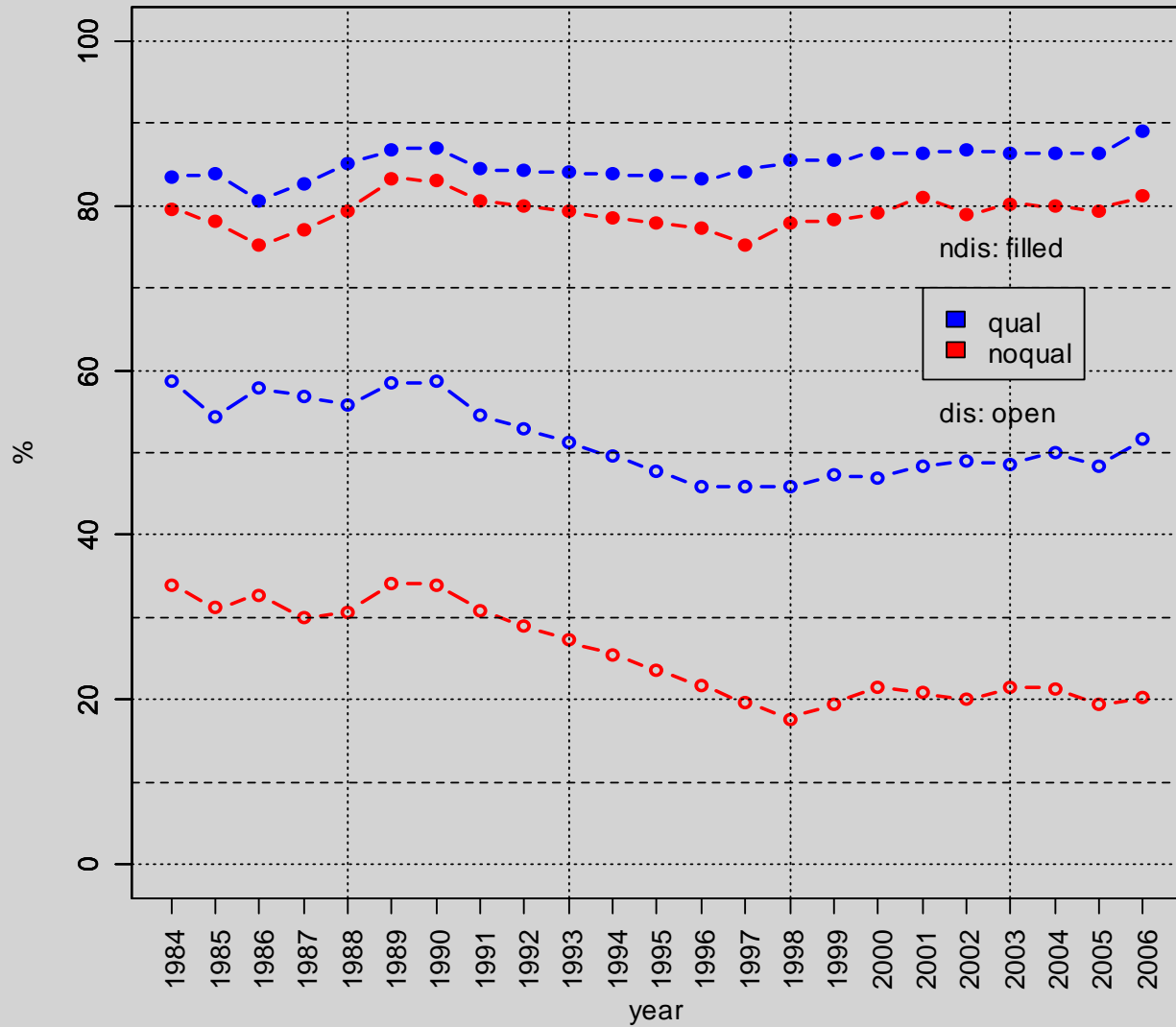
**UK Males: all, qual & noqual
working age employment rates, 1984-2006, %**



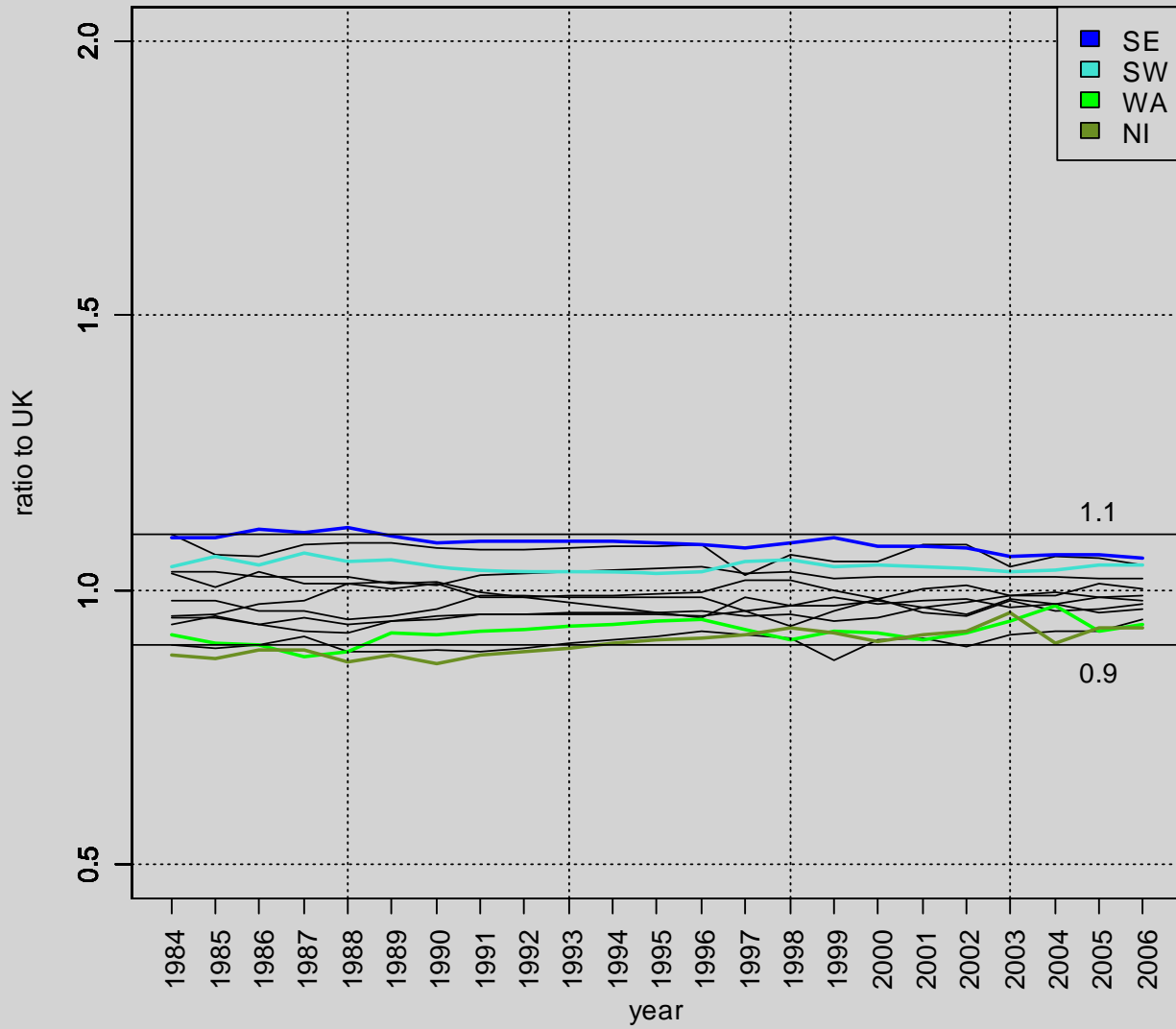
**UK Males: all, ndis & dis
working age employment rates, 1984-2006, %**



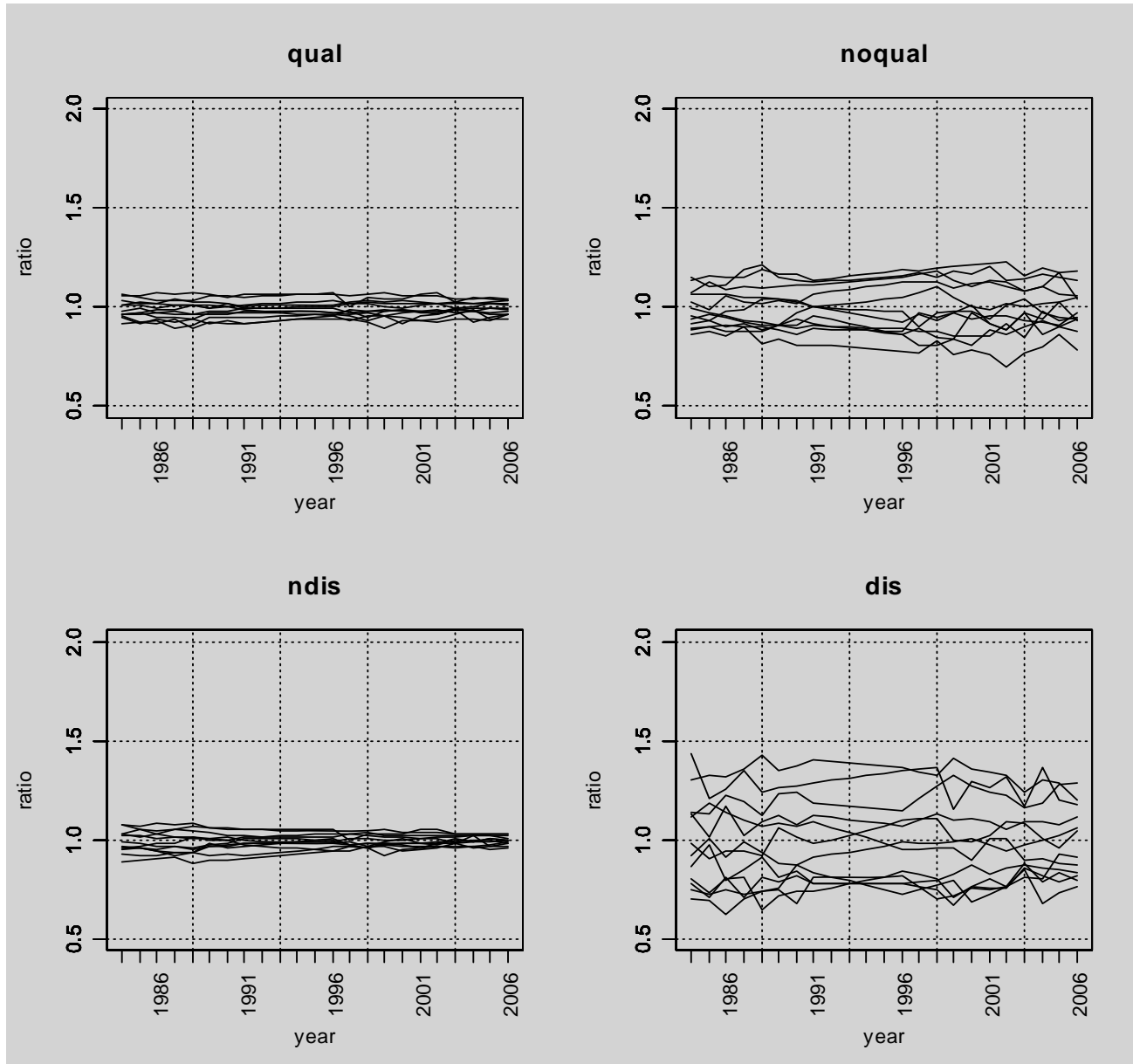
UK Males: qual & noqual by non-dis & dis
working age employment rates, 1984-2006, %



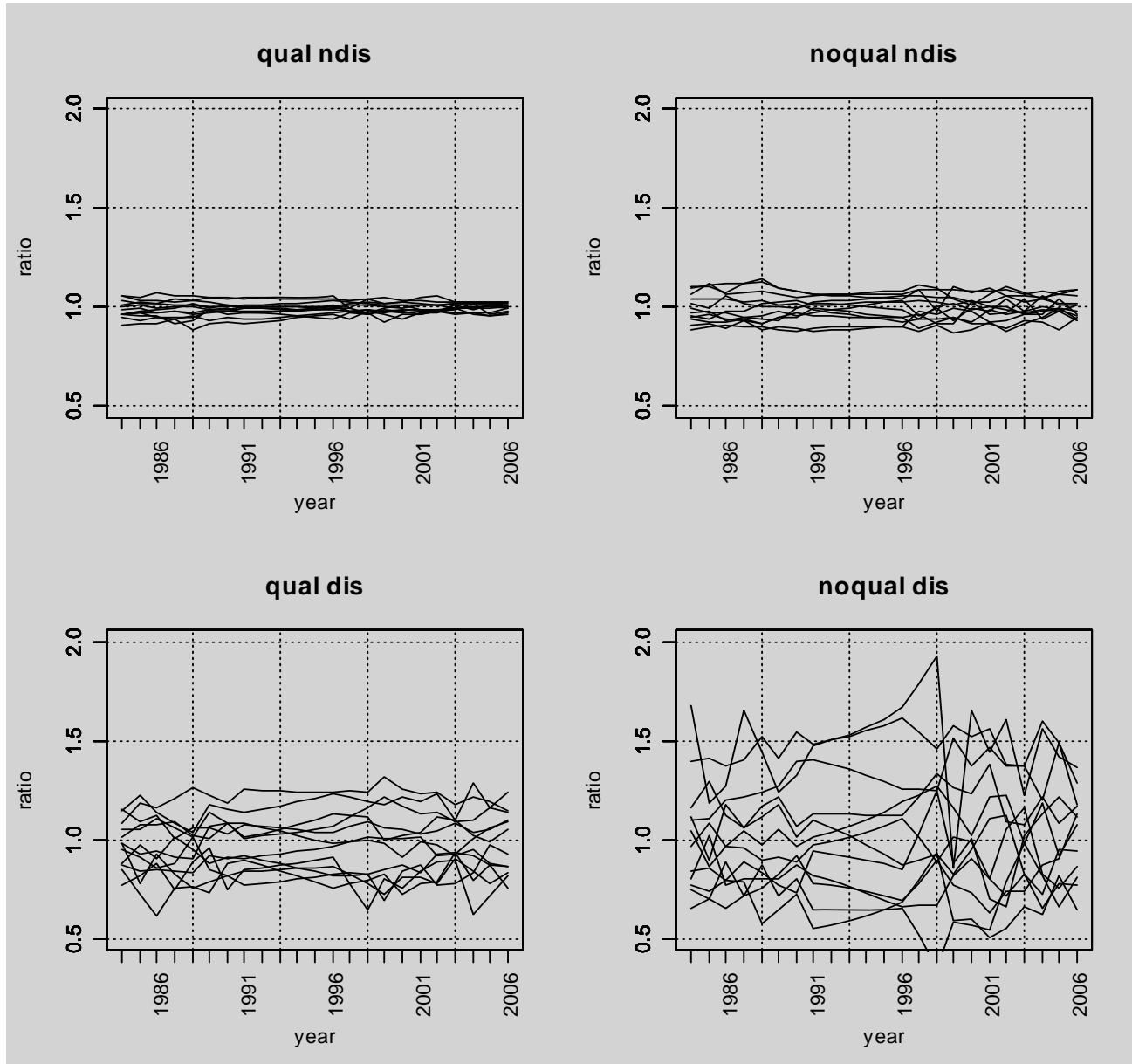
male employment rate by region, 1984-2006, ratio to UK



Regions, ratio to UK: employment rate 1



Regions, ratio to UK: employment rate 2



Summary

1. Incidence

- incidence of noqual has fallen dramatically
- incidence of dis has risen slightly
- Incidence of noqual dis has hardly changed -> the share of dis in noqual has doubled
- only for qual & qual dis has the regional 'spread' of incidence has narrowed -> relative position of regions has changed relatively little

2. Employment rates

- overall employment rate peaked in 1989/90 and rose after 1996
- noqual employment rate has fallen
- noqual ndis employment rate little changed, much larger fall for noqual dis
- only for overall employment rate, qual & qual ndis has regional 'spread' reduced

3. Overall

employment growth since the mid-1990s seems to have done little to improve either the labour market outcomes of the more disadvantaged or the relative position of poorer regions